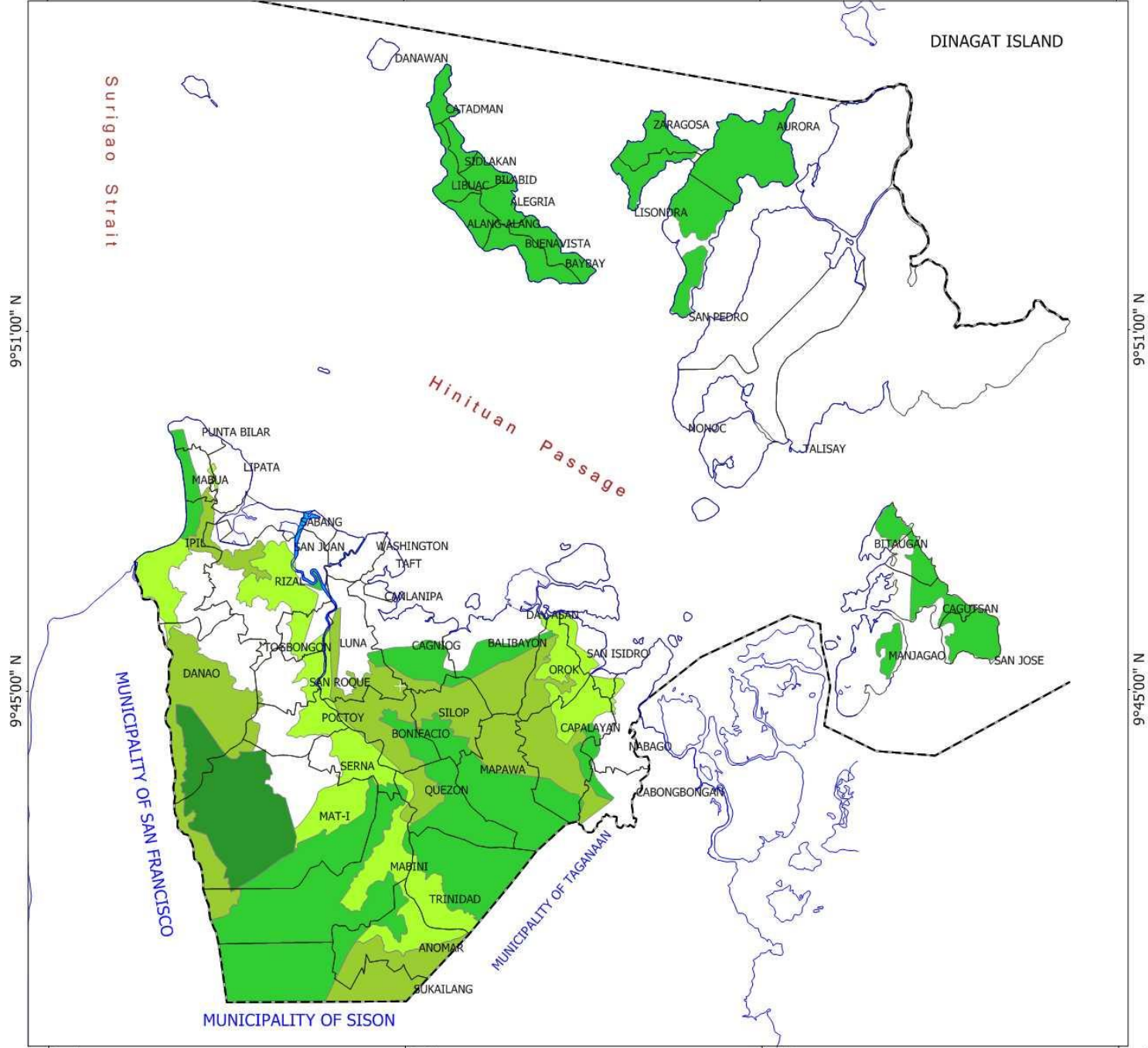


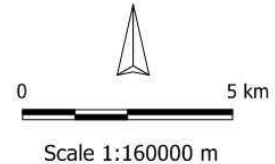
125°24'00" E 125°30'00" E 125°36'00" E 125°42'00"



125°24'00" E 125°30'00" E 125°36'00" E 125°42'00"



CITY OF SURIGAO LAND SUITABILITY MAP



LEGEND

- LAND SUITABILITY**
- SCC- CULTIVATED ANNUAL CROPS
 - SPF-PRODUCTION FOREST(NATIVE SPECIES)
 - SR-IRRIGATED RICE / FISHPOND
 - STV-PERENNIAL TREE & VINE CROPS
 - Not Suitable for Any of the Above Land Uses
 - Barangay Boundaries
 - City / Municipal Boundary
 - River
 - Coastline

Data Source:
Bureau of Soils and City Planning
and Development Office.

Philippines Zone V
Lon: 125°32.920' E
Lat: 9°47.786' N
Printed at: 3/26/2011

9°51'00" N
9°45'00" N